



MARTIN'S HOTELS

CONFERENCES & EVENTS



A collection of great hospitality
9 BELGIAN CITIES • 13 HOTELS • 67 MEETING & EVENT ROOMS

martinshotels.com



BILZEN
Martin's Rentmeesterij

BRUGGE
Martin's Relais
Martin's Brugge

BRUSSELS
Martin's Brussels EU

GENVAL
Martin's Château du Lac
Martin's Manoir

MECHELEN
Martin's Patershof

LEUVEN
Martin's Klooster

TUBIZE
Martin's Red

LOUVAIN-LA-NEUVE
Martin's Louvain-la-Neuve
Martin's All Suites

WATERLOO
Martin's Grand Hotel
Martin's Waterloo

A collection of great hospitality
9 BELGIAN CITIES • 13 HOTELS • 67 MEETING & EVENT ROOMS

WELCOME TO MARTIN'S HOTELS



DISCOVER WHAT WE HAVE TO OFFER

13 hotels, 9 cities, 67 meeting rooms: read online about our wide range of special arrangements for meetings.

CONFIGURE YOUR EVENT

An easy-to-use and intelligent tool which immediately displays your request and sends us a request for a price quotation.

[See more info on meetings-and-more.com](http://meetings-and-more.com)



EVENT CANCELLATION INSURANCE

MARTIN'S HOTELS offers you the possibility of taking out a cancellation insurance to cover you in the event of cancellation for reasons beyond your control.

[More information on page 30.](#)



TEAM BUILDING & MOTIVATIONAL SEMINARS

Whether outside or inside, team building exercises can only deliver their promises if the mood and the setting are conducive to cohesion and motivation.

[Discover our team building activities on page 32.](#)

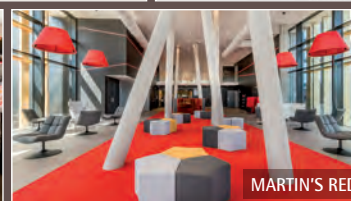
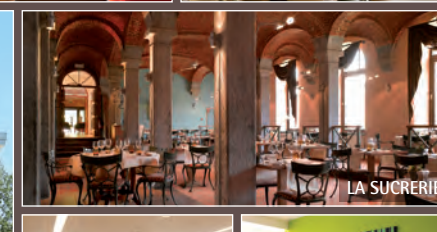
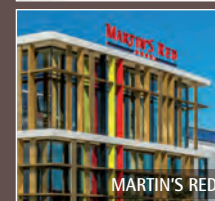
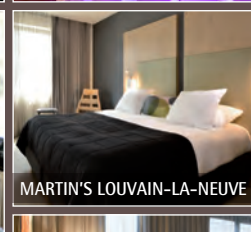
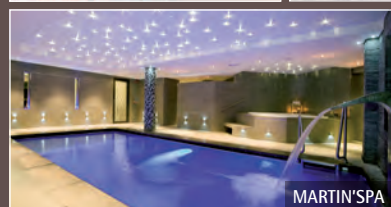


CHOOSE ECO-EFFICIENCY

Zero Carbon Seminars, Eco Vouchers and EMAS certification: guaranteed added value for your event and your corporate image.

[All about our sustainable development project on page 34.](#)

See more info on meetings-and-more.com





MARTIN'S RENTMEESTERIJ

BILZEN • BELGIUM

The hotel has been created within the commandery of Alden Biesen, and will be augmented by a contemporary wing that plays on the contrasts between the strength of the past and the purity of more recent developments. With its 72 guest rooms, lounges, restaurant and pleasant terrace, bar and meeting and banquet facilities, it will lend itself particularly well to holidays, business events, receptions and wedding dinners. The hotel will also have a wellness area with pool and will look out onto a pleasant courtyard and extensive wooded gardens.

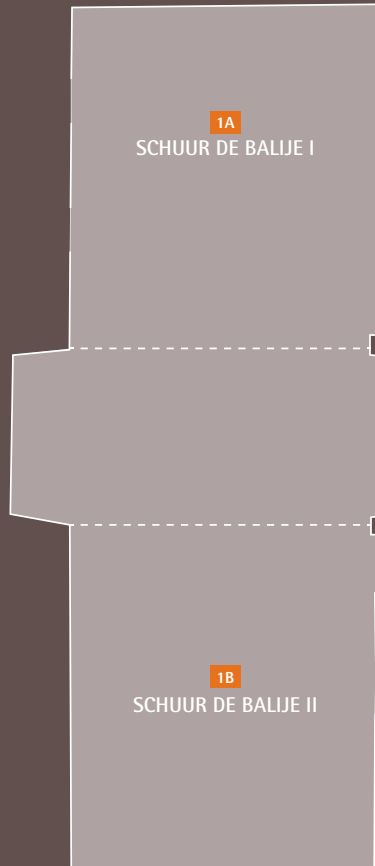
Le MARTIN'S RENTMEESTERIJ est un hôtel 4 étoiles au cœur la Commanderie d'Alden Biesen, un site historique exceptionnel. Il vous accueillera à partir de juin 2018 dans un cadre unique mêlant culture, gastronomie, loisirs et détente. Avec ses 72 chambres, ses salons, son restaurant et son agréable terrasse, son bar et ses salles de réunion et de banquet, il se prêtera particulièrement bien aux séjours touristiques, événements professionnels, réceptions et dîners de mariage. Il disposera également d'un espace wellness avec piscine et donnera sur une agréable cour et de vastes jardins arborés.

MARTIN'S RENTMEESTERIJ is een viersterrenhotel in het hart van een uitzonderlijke historische site: de Landcommanderij Alden Biesen. Het hotel opent in juni 2018 zijn deuren en biedt u een exclusieve belevenis waarin cultuur, gastronomie, ontspanning en aangenaam vertoeven naadloos samengaan. Met zijn 72 kamers, de talrijke salons, zijn klasserestaurant met aangenaam terras, de bar en zijn vergader- en banketzalen, is het hotel perfect uitgerust voor al uw toeristische ontdekkingstochten, bedrijfsfevenementen, recepties en trouwfeesten. U kunt er ook aangenaam herbronnen in onze wellnessoase met zwembad. Het hotel kijkt uit op de authentieke binnenkoer en op de uitgestrekte boomrijke tuinen.

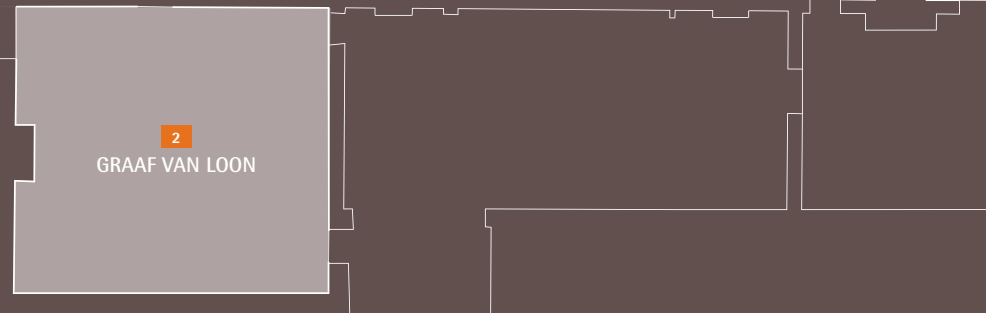


3 Meeting, Banquet & Event Rooms • 72 Guest Rooms & Suites
Salons • Bar • Restaurant • Terrace & Garden • Wellness & Swimming pool • Parking

GROUND FLOOR



FIRST FLOOR



DESCRIPTION OF MEETING & BANQUET ROOMS

	MEETING ROOM	AREA (m ²)	DIMENSIONS (m)	U-SHAPE	CLASSROOM	THEATRE	BANQUET	BOARDROOM	COCKTAIL
1A	SCHUUR DE BALIJ I	90	9.75 x 9.35	30	48	80	70	24	100
1B	SCHUUR DE BALIJ II	88	9.77 x 9.34	30	48	80	70	24	100
1A+1B	SCHUUR DE BALIJ I + II	234	24.66 x 9.35	—	—	—	150	—	250
2	GRAAF VAN LOON	77	9.09 x 8.56	30	48	80	—	24	—
3	HEER VAN BIESEN	21	5.78 x 3.70	—	—	—	12	12	—

Drifting back through the course of time

A flourishing trading market of medieval Europe, Bruges offers a unique experience: staying within these walls still resonant with Hanseatic prosperity, the roars of the Lion of Flanders and the flamboyant emotions of the Flemish Primitives.

MARTIN'S BRUGGE offers you the possibility to organise your event at an unique & historical venue in the heart of the city (at the Belfry, Congrescentrum Oud Sint-Jan or Provinciaal Hof)!

Remonter le cours du temps au fil de l'eau

Florissant marché d'échanges de l'Europe médiévale, Bruges offre une expérience unique : séjourner au cœur de ces murs vibrant encore de la prospérité hanséatique, des rugissements du Lion des Flandres et des flamboyants émois des Primitifs flamands... MARTIN'S BRUGGE vous offre la possibilité d'organiser votre événement dans un endroit unique et historique, au cœur de la Venise du Nord (tel que Le Beffroi, le Centre de Congrès Oud Sint-Jan ou la Cour Provinciale) !

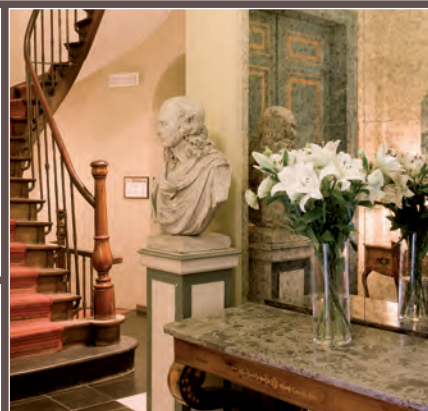
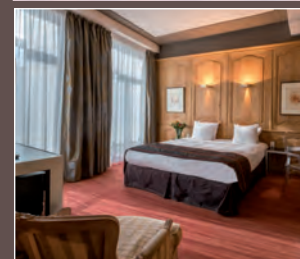
Dobberen op de stroom naar het verleden

Brugge, de bloeiende handelsstad van de Middeleeuwen, heeft een unieke ervaring te bieden: een verblijf binnen de stadsmuren waar de voorspoed van het hanze-verleden, het gebrul van de Leeuw van Vlaanderen en de schitterende emoties van de Vlaamse Primitieven onverminderd voortleven...

MARTIN'S BRUGGE biedt u de mogelijkheid om uw evenement te laten doorgaan op een unieke historische locatie in het hartje van de stad (in het Belfort, Congrescentrum Oud Sint-Jan of Provinciaal Hof)!



199 Guest Rooms • Bar • Spacious Terrace • Parking



44 Guest Rooms & Suites • Bar • Garden • Parking nearby

Charm and quiet

In the romantic centre of Bruges, enjoy the charm and quiet of genuine 17th century merchants' houses, a period when the Governor of Amsterdam built his secondary residence there. An authentic Bruges experience in the peace and quiet of surroundings steeped in history.

Charme et douceur

Vivez le charme et la douceur d'authentiques maisons de maître dans le centre névralgique de Bruges. Une expérience profondément brugeoise dans la quiétude de confortables lieux de mémoire.

Charme en geborgenheid

Geniet, in het centrum van Brugge, van de charme en de geborgenheid van authentieke herenhuizen uit de 17de eeuw, indertijd het buitenverblijf van de Amsterdamse ambassadeur. En dompel u op die gedenkwaardige plek meteen onder in de typisch Brugse sfeer.



Live out a dream in the cradle of Europe

Strategically located in the heart of Brussels, MARTIN'S BRUSSELS EU prides itself on its highly professional, experienced and creative organisation. From the Grand'Place to the European Union buildings, through some of the picturesque squares of the "Capital of Art Nouveau", centuries of architecture reveal wonderful discoveries right next to your hotel.






Vivre un rêve dans le berceau de l'Europe

Stratégiquement situé au cœur de Bruxelles, MARTIN'S BRUSSELS EU se targue d'une organisation hautement professionnelle, expérimentée et créative. De la Grand-Place aux bâtiments de l'Union européenne, en passant par les prestigieux squares de la capitale de l'Art Nouveau, des siècles d'architecture dévoilent de pures merveilles à proximité immédiate de votre hôtel.

Wegdromen in het hartje van Europa

Strategisch gelegen in het hart van Brussel gaat MARTIN'S BRUSSELS EU prat op zijn uiterst professionele, ervaren en creatieve organisatie. Van de Grote Markt tot de gebouwen van de Europese Unie, door de prestigieuze "squares" van de bekende "hoofdstad van de Art Nouveau" wordt u verbaasd door zijn eeuwenlange architectuurtraditie. Vlak in de buurt van uw hotel...



DESCRIPTION OF MEETING & BANQUET ROOMS									
MEETING ROOM		FLOOR	AREA (m²)	U-SHAPE 	CLASSROOM 	THEATRE 	CABARET 	BOARDROOM 	INTERPRETER'S BOOTH
1	TOPAZ	1	100	50	80	120	48	50	✓
2	AMBER	1	30	14	16	20	—	14	✓
3	BRONZE	1	38	14	16	25	—	12	—
4	COPPER	1	30	14	16	20	—	12	✓
2 + 3	AMBER + BRONZE	1	68	28	32	45	—	26	✓
3 + 4	BRONZE + COPPER	1	68	28	32	45	—	26	✓
5 (2+3+4)	QUARTZ (AMBER + BRONZE + COPPER)	1	98	40	60	80	48	44	✓
6	JADE	1	25	—	—	—	—	16	—

MARTIN'S CHATEAU DU LAC

CONFERENCE & SPA
GENVAL • BELGIUM

Recharge your batteries
in "the garden of Brussels"

From the Lake of Genval to the Abbey of Villers-la-Ville, from the Collegiate Church of Nivelles to the Folon Foundation, Brabant Wallon reveals an amazing heritage, by turns baroque, romantic and avant-garde, authentically gourmet and naturally bountiful!

Se ressourcer dans
« le jardin de Bruxelles »

Du Lac de Genval à l'Abbaye de Villers-la-Ville, de la Collégiale de Nivelles à la Fondation Folon, le Brabant wallon révèle un étonnant patrimoine tour à tour baroque, romantique, avant-gardiste, gourmand d'authenticité et généreux de nature !

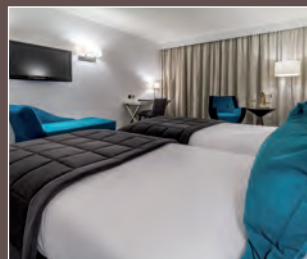
12

Zich herbronnen in
"de tuin van Brussel"

Van het meer van Genval tot de abdij van Villers-la-Ville, van de collegiale van Nijvel tot de Fondation Folon: Waals-Brabant herbergt een verbazingwekkend erfgoed. Soms barok, dan weer romantiek of avantgarde, altijd authentiek en weelderig van natuur!



MARTIN'S SPA
FITNESS & BODYw/HEALTH



23 Meeting, Banquet & Event Rooms (from 10 to 1,050 guests)
122 Guest Rooms & Suites • Bar Kingfisher • Restaurant Genval.Les.Bains • Terrace & Garden
Spa & Fitness • Parking • Electric vehicle charging stations

ARGENTINE

THE VENUE FOR GREAT OCCASIONS

A unique, multi-functional space measuring 990 m² with a ceiling height of 5.30 m. Truly grandiose! ADJUSTABLE ROOM – capacity from 100 to 1,050 guests.

General description

ACCESS

Direct access to Argentine B through the back door (3.75 m x 2.7 m high, by arrangement max. height: 3.40 m).
Goods lift: 2.5 m x 2 m x 2 m (maximum load: 2,500 kg). Maximum imposed load in the room: 500 kg/m².

EXTERNAL WATERFALL

Dimensions: 3 m x 3 m. Rocks with flowing water, plants and night-time lighting.

PARTITION

Totally soundproofed, made up of 24 panels: 1.20 m x 4.75 m.
3 access doors:
1 central door: 1.92 m x 2.05 m
and 2 side doors: 90 cm x 2.05 m.

DRESSING ROOM

Artist's dressing room in the basement (-1) beneath the stage. Shower and toilet area. Access via staircases on each side of the stage.

STAGE

Dimensions: 11.65 m x 4.50 m.
Height: variable: 20, 40 or 60 cm.
Removable parquet dance floor: adjustable with modules from 56 to 100 m².
Electric stage curtains operated by infrared remote control.

MEZZANINE

Located above the bar: 1.70 m x 25 m.
Access via staircase from the bar (max. width: 1.70 m).



Technical equipment

SCREEN

Electric, infrared remote control.
Dimensions: 6 m wide x 4.25 m high.
Sound system: 28 Bose loudspeakers, 25 W each. Amplifier: 2 x 950 W – 100 V with 5 disc Sony CD. Professional mixing console with 8 inputs and 4 outputs. Wall boxes: 1 on mezzanine side and 1 on each side of the stage.

ELECTRICITY – TELEPHONY

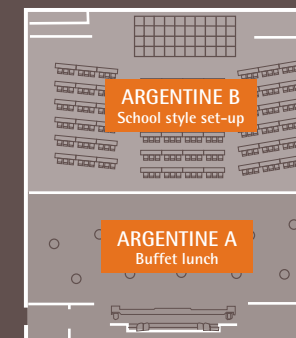
From mezzanine: 1 x 63 A – 380 V.
From stage: 1 x 63 A – 380 V.
Additionally if necessary: 1 x 3 x 125 A – 220 V.
- 40 power points in the floor every 2 m with 2 power sockets each.
- 20 telephone sockets are available in the floor.
- Power points with ISDN or ADSL line capability, WLAN.
- Laser show: 1 x 63 A – 380 V with water inlet and outlet on the mezzanine, four other water inlets are available.
- Cable television : jack available in the three floor power points in front of the stage.

HANGING POINTS

12 motors are at equal distance of 4.50 m and each supports a maximum weight of 500 kg. The first row of 3 points is located 7.50 m from the mezzanine. These motors are remotely controlled. 2 suspension bars are available above

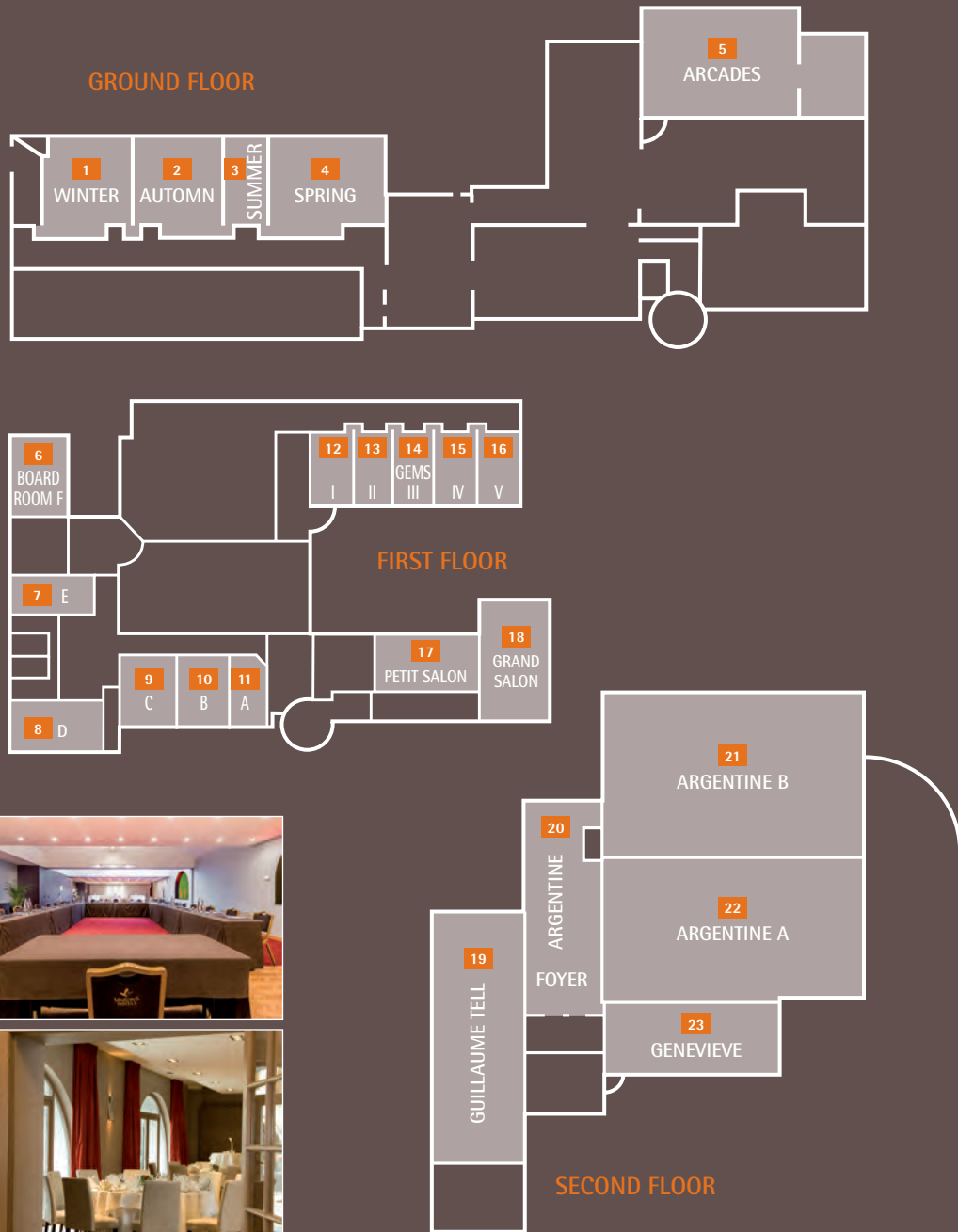
LIGHTING








- RGB LED lighting (floor and ceiling) controlled by a DMX console.
- 150 W spots on side and in frames.
- Tracking spot.
- Neon lights in frames.
- Lighting in floor.
- Stage lighting: 6 theatre spots of 1,000 W.
- Optical fibres and starred ceiling.
- Switch to separate rooms on the mezzanine.
- Preset by remote control.
- Option of dimmer and complete black-out.
- Option of manual control from the mezzanine.



13

Safety standards to be complied with (Failure to comply with these standards may result in cancellation of the event).
- Safety: 6 doors on left side of stage and 7 doors on right side + 12 fire extinguishers and 2 fire hydrants. The route to these exits must not be obstructed.
- Sound or other cables must be placed in the false ceilings from the mezzanine to the stage and vice-versa.
- All audio-visual and other equipment must be installed in the mezzanine.
- Parking is prohibited in front of the access to Argentine B. Loading and unloading permitted by arrangement.
- Use of non-inflammable or flame-retardant equipment.
- The use of confetti is not allowed.



DESCRIPTION OF MEETING & BANQUET ROOMS										
MEETING ROOM	AREA (M²)	DIMENSIONS (M)	HEIGHT (M)	U-SHAPE	CLASSROOM	THEATRE	CABARET	BANQUET	BOARDROOM	COCKTAIL
										

GROUND FLOOR											
1	WINTER	61	7.90 x 7.70	2.55	20	35	56	30	60	—	110
2	AUTUMN	61	7.90 x 7.70	2.55	20	35	56	30	60	—	110
3+4	SPRING & SUMMER	108	14.00 x 7.70	2.55	30	69	112	42	80	—	165
1+2+3+4	FOUR SEASONS	250	32.45 x 7.70	2.55	—	160	200	160	200	—	400
5	ARCADES	100	12.70 x 7.80	2.65	34	42	90	60	80	—	150

FIRST FLOOR											
6	BOARDROOM F	40	8.00 x 5.00	2.40	18	16	36	20	—	20	—
7	BOARDROOM E	28	7.40 x 3.80	2.40	—	—	—	10	—	10	—
8	BOARDROOM D	42	8.40 x 5.00	2.40	17	—	—	18	—	18	—
9	BOARDROOM C	33	6.30 x 5.20	2.40	14	—	—	16	—	16	—
10	BOARDROOM B	30	6.30 x 4.80	2.40	13	—	—	14	—	14	—
11	BOARDROOM A	22	6.30 x 3.50	2.40	—	—	—	10	12	10	—
12/13/14/15 or 16	GEMS I / II / III / IV or V	20	5.77 x 3.50	2.66	—	—	12	—	10	10	20
12+13	GEMS I + II	40	5.77 x 6.70	2.66	14	—	24	—	30	16	50
12+13+14	GEMS I + II + III	60	5.77 x 10.20	2.66	22	16	42	36	50	24	80
12+13+14+15	GEMS I + II + III + IV	80	5.77 x 13.70	2.66	26	20	60	48	70	28	110
12+13+14+15+16	GEMS I + II + III + IV + V	100	5.77 x 17.20	2.66	30	28	90	58	80	32	140
17	PETIT SALON DU LAC	55	10.70 x 5.20	3.25	24	30	64	30	40	—	80
18	GRAND SALON DU LAC	82	12.30 x 6.65	3.25	33	36	104	42	80	—	120

SECOND FLOOR											
19	GUILLAUME TELL	300	29.65 x 9.90	3.16	80	202	306	180	270	—	500
20	ARGENTINE FOYER	130	8.35 x 15.54	2.70	—	—	—	—	—	—	80
21	ARGENTINE B	535	18.85 x 28.40	5.30	—	336	600	400	530	—	825
22	ARGENTINE A	327	11.50 x 28.40	5.30	—	210	320	280	320	—	500
21+22	ARGENTINE B + A	992	30.35 x 28.40	2.65/5.30	120	762	1,050	750	850	—	1,050
23	GENEVIEVE	156	19.10 x 8.15	3.10	45	80	154	80	140	—	250



MARTIN'SPA

FITNESS & BODYWHealth

A sensorial time-space environment For seminars with the highest potential

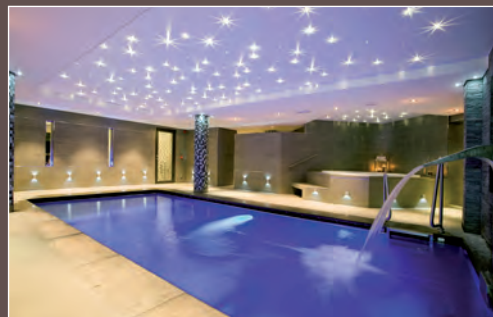
At the MARTIN'S CHÂTEAU DU LAC, innovation has given rise to some new traditions. Because concentration is maximised by being relaxed, our residential seminars now include a new dimension: regeneration. And you can now opt to include this dimension in your professional events. Moments of total relaxation and à la carte treatments. In an innovatively designed 1,500 m² temple of well-being, at the cutting edge of comfort and modernity.

Un espace-temps sensoriel Pour des séminaires à très haut potentiel

Au MARTIN'S CHÂTEAU DU LAC, l'innovation fait naître de nouvelles traditions. Parce que la relaxation optimise la concentration, nos séminaires résidentiels intègrent désormais une nouvelle dimension : le ressourcement. Une dimension que vous pouvez maintenant choisir d'associer à vos événements professionnels. Des moments de détente intégrale et des soins à la carte. Dans un temple de bien-être de 1 500 m² au design innovant, à la pointe du confort et de la modernité.

Pure ontspanning voor alle zintuigen Voor seminars met een zeer hoog potentieel

In MARTIN'S CHÂTEAU DU LAC vloeien uit innovatie nieuwe tradities voort. Omdat relaxatie de concentratie aanzwengelt, wordt in onze residentiële seminars voortaan een nieuwe dimensie belicht: de herbronning. Zodoende kunt u van nu af aan het maximum uit uw professionele evenementen halen. Momenten van totale ontspanning en op maat gesneden zorgbehandelingen die u aan anderen cadeau kunt doen of waarop u zichzelf kunt vergasten. En dat alles in een 1.500 m² grote, hypermoderne en toch uiterst gezellige oase van welzijn met een innoverend design.








Fitness & Pool open Weekdays: from 07.00 to 22.00
Weekends and public holidays: from 09.00 to 20.00
Spa open Mon. - Sun.: from 09.00 to 19.00 Wed. - Thu.: from 09.00 to 20.00
Free Parking



Multi-purpose Meeting Rooms (from 10 to 200 guests)
12 Guest Rooms • Terrace & Garden • Parking
Bar, Restaurant & Spa at neighbouring MARTIN'S CHATEAU DU LAC

DESCRIPTION OF MEETING & BANQUET ROOMS

		AREA (m ²)	HEIGHT (m)	U-SHAPE 	CLASSROOM 	THEATRE 	BANQUET 	BUFFET 	COCKTAIL 
1	GRAND SALON	82	3.80	28	30	50	60	50	100
2	SALLE À MANGER	30	3.80	—	—	—	20	—	30
3	BOUDOIR	25	3.80	5	5	—	10	—	—
1 + 2	GRAND SALON + SALLE À MANGER	112	3.80	—	—	—	100	80	200
	BAR + LES GENÊTS	70	2.40	14	14	—	30	—	100

MARTIN'S MANOIR

COUNTRY HOUSE
GENVAL • BELGIUM

A secret, very exclusive place

A charming Victorian country house located in the middle of a magnificent leafy park overlooking the Lac de Genval. Beautiful reception and meeting areas, terrace and garden. Free choice of caterer.

Un lieu secret, un régal d'exclusivité

Une demeure victorienne de charme située au milieu d'un magnifique parc de verdure avec vue sur le Lac de Genval. De beaux espaces de séminaire et réception, terrasse et jardin. Libre de traiteur.

Een geheime en exclusieve locatie

Een victoriaanse woning vol charme gelegen in een prachtig groen park met zicht op het Meer van Genval. Mooie ontvangst- en seminarieruimtes, terras en tuin. Vrij van traiteur.



Dive into a whirlpool of culture

With its famous university, Leuven is bustling and buzzing with life: with a gift for business and a fondness for good fare, a hunger for learning and a penchant for lavish celebrations. From the hustle and bustle of the Grote Markt to the contemplation of the Beguine convent, a fabulous wealth of sensations to enjoy!

Plonger dans un bouillonnant bain de culture

Géante universitaire, Louvain est fourmi et cigale : douée pour le commerce et friande de bonne chère, férue de savoir et prodigue en réjouissances. De l'animation du Grote Markt au recueillement du Béguinage, une fabuleuse palette de sensations à savourer !

18

Onderdompelen in een bruisende smeltkroes van culturen

Leuven, universiteitsstad bij uitstek, is krekel én mier: aanleg voor handel, verslingerd op 'n goede maaltijd, tegelijk bezeten van kennis en kwistig met festiviteiten. Van animatie op de Grote Markt tot het onthaal in het Begijnhof: een fabelachtig palet sensaties om van te genieten!



3 Meeting Rooms (up to 100 guests) and 2 Banquet & Event Rooms (up to 120 guests)
103 Guest Rooms & Suites • Bar • Terrace & Garden • Parking



19

DESCRIPTION OF MEETING & BANQUET ROOMS										
	MEETING ROOM	AREA (m²)	HEIGHT (m)	U-SHAPE	CLASSROOM	THEATRE	CABARET	BANQUET	BOARDROOM	COCKTAIL
1	PREDIKHEREN	80	2.90	40	51	70	54	—	38	100
2	FRANCISCANEN	50	2.90	24	32	50	32	—	22	60
3	DOMINICANEN	60	2.90	37	40	60	40	—	34	80
1 + 2 + 3	MEETING ROOM	190	2.90	56	99	146	80	—	54	240
	FOYER	36	3.90	—	—	—	—	—	—	70
	ORANGERY	105	—	—	—	—	—	80	—	120
	MORILLON	60	—	—	—	—	—	40	—	80



MARTIN'S LOUVAIN-LA-NEUVE

LOUVAIN-LA-NEUVE ★★★ SUPERIOR BELGIUM

MARTIN'S LOUVAIN-LA-NEUVE, a superior 3-star hotel of the highest quality

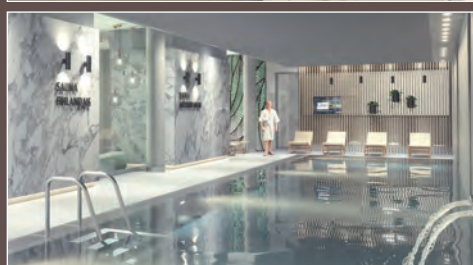
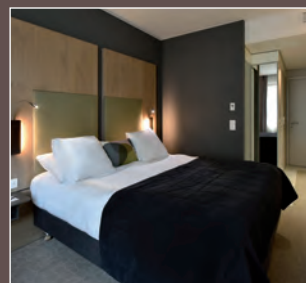
Thanks especially to the inclusion of every modern convenience, Martin's Louvain-la-Neuve's 108 guest rooms offer you a warm Zen atmosphere in contemporary design and uncompromising in comfort. For your business, academic or leisure trips, the hotel welcomes you to the pedestrian centre of Louvain-la-Neuve and invites you to live a unique experience in the heart of the Agora complex and all its facilities.

MARTIN'S LOUVAIN-LA-NEUVE, un hôtel 3* supérieur qui a tout d'un grand.

Ses 108 chambres au design contemporain et au confort sans compromis, notamment grâce à un équipement très complet, vous offrent une atmosphère zen et chaleureuse. Elles vous accueillent pour vos voyages professionnels, académiques ou de loisirs en plein centre piétonnier de Louvain-la-Neuve et vous invitent à vivre une expérience unique au cœur du complexe Agora et de toutes ses facilités.

MARTIN'S LOUVAIN-LA-NEUVE, een superieur driesterrenhotel van de hoogste plank.

De 108 kamers blinken uit in hedendaags design en compromisloos comfort. Ze zijn tot in de puntjes uitgerust en dompelen u onder in een aangename zensfeer. De kamers zijn perfect voor zakenreizigers, academici en toeristen, middenin het verkeersvrije centrum van Louvain-la-Neuve. Beleef een unieke ervaring in het hart van het Agora-complex en al zijn voorzieningen.



9 Meeting & Event Rooms • Coworking Areas • 108 Guest Rooms • 102 Suites & apartments
Brasserie B' Comme • Wine Bar • Street Food • Tea Room • Martin's City Spa • Garden



MARTIN'S ALL SUITES

LOUVAIN-LA-NEUVE ★★★ BELGIUM

First MARTIN'S HOTELS' All Suites

MARTIN'S ALL SUITES offer you exclusive suites and apartments from 35 m² to 95 m² for short, medium-length or long stays. The 102 spacious, airy and exquisitely equipped suites (with kitchen) allow you to enjoy a home-like autonomy and comfort, while ushering you into a unique hotel experience, in the heart of the Agora complex and facilities, with a variety of personalised services. Some suites are equipped with a balcony overlooking the city or the landscaped courtyard, and some also offer stunning views of Lake Louvain-la-Neuve.

Premier All Suites de MARTIN'S HOTELS

MARTIN'S ALL SUITES propose des suites et appartements exclusifs de 35 m² à 95 m² pour vos séjours de courte, moyenne ou longue durée. Spacieuses et lumineuses, les 102 suites ultra-équipées avec cuisine, vous permettent de bénéficier d'une autonomie et d'un confort 'comme à la maison', tout en vous ouvrant les portes d'une expérience hôtelière unique, assortie de services personnalisés, au cœur du complexe Agora et de toutes ses facilités. Parfois équipées de balcons donnant sur la ville ou sur la cour paysagère, certaines suites offrent aussi des vues imprenables sur le lac de Louvain-la-Neuve.

1^{ste} All Suites van MARTIN'S HOTELS

MARTIN'S ALL SUITES biedt u exclusieve suites en appartementen van 35 m² tot 95 m², zowel voor korte, middellange als lange verblijven. De 102 ruime suites (met keuken) zijn uitgerust met de modernste apparatuur en genieten een weldadige lichtinval. U vindt er alle autonomie en comfort 'zoals thuis', in combinatie met de gepersonaliseerde dienstverlening van een unieke hotelervaring. All Suites ligt bovendien in het hart van het Agora-complex met al zijn eet- en ontspanningsgelegenheden. Sommige suites hebben een balkon dat uitgaat op de stad of de binnenplaats, terwijl andere suites een adembenemend zicht bieden op het meer van Louvain-la-Neuve.



MARTIN'S LOUVAIN-LA-NEUVE • Rue de l'Hocaille 1 • 1348 Louvain-la-Neuve • Belgium • tel. +32 (0)10 77 20 20 • lln@martinshotels.com

MARTIN'S ALL SUITES • Rue de l'Hocaille 3 • 1348 Louvain-la-Neuve • Belgium • tel. +32 (0)10 77 20 20 • lln@martinshotels.com



MARTIN'S AGORA

CITY RESORT
LOUVAIN-LA-NEUVE • B E L G I U M

Private and professional events

Meetings, conferences, incentives, cocktails, product presentations, ... The hotel offers 575 m² of modular spaces, equipped with state-of-the-art technology, and designed for the organisation of professional or private events (up to 400 persons in walking dinner). Larger events can be held at the Aula Magna Conference Centre or at the Cinescope Cinema, both located in front of the Resort. The Agora complex also offers you a co-working space.

Événements privés et professionnels

Séminaires, conférences, incentives, cocktails, présentations de produits... L'hôtel vous propose 575 m² d'espaces modulables équipés à la pointe de la technologie et destinés à l'organisation d'événements professionnels ou privés (jusqu'à 400 personnes en walking dinner). Les événements de plus grande taille peuvent être organisés au Centre de conférences Aula Magna ou au Cinéma Cinescope, tous deux situés en face du Resort. Un espace co-working vous attend également au cœur du complexe 'Agora'.

Privé- en zakenevenementen

Het hotel stelt u 575 m² moduleerbare zalen ter beschikking voor uw seminars, conferenties, recepties, productvoorstellingen ... Ze zijn uitgerust met de laatste nieuwe technologie zodat uw business event of privéfeest (tot 400 personen in walking dinner) van een leien dakje loopt. Voor grotere evenementen werken wij samen met het Aula Magna-conferentiecentrum en de Cinescoop-bioskoop, beiden gelegen tegenover het Resort. Het Agora-complex biedt u ook een co-workingkantoor aan.



9 Meeting & Event Rooms • Coworking Areas • 108 Guest Rooms • 102 Suites & apartments
Brasserie B' Comme • Wine Bar • Street Food • Tea Room • Martin's City Spa • Garden



DESCRIPTION OF MEETING & BANQUET ROOMS									
	MEETING ROOM	AREA (m ²)	DIMENSIONS (m)	U-SHAPE	CLASSROOM	THEATRE	BANQUET	BOARDROOM	COCKTAIL
1	INFINITY	44.3	5.4 x 8.2	24	25	63	24	26	62
2	INTENSITY	46.7	5.7 x 8.2	24	25	63	24	28	67
3	SERENITY	46.7	5. x 8.2	20	26	55	24	28	67
2+3	INTENSITY + SERENITY	93.5	11.4 x 8.2	39	56	99	108	42	134
1+2+3	INFINITY + INTENSITY + SERENITY	142.7	17.4 x 8.2	53	86	154	120	60	204
4	VITALITY	23.0	4.1 x 5.6	10	12	21	12	16	—
5	HARMONY	22.4	4.0 x 5.6	12	12	20	12	16	—
6	ENERGY	23.0	4.1 x 5.6	12	12	20	12	16	—
4+5	VITALITY + HARMONY	45.4	8.1 x 5.6	26	28	49	—	30	—
4+5+6	VITALITY + HARMONY + ENERGY	68.3	12.2 x 5.6	38	42	70	60	42	101
7	CREATIVITY	35.3	4.9 x 7.2	12	—	24	—	20	50
8	AGORA	218.8	12.6 x 17.37	50	101	188	200	76	400
9	CONNECTIVITY			—	—	—	—	12	—
	+ 5 Business Suites – for small meetings up to 6 people								
	+ 1 Event Suite – 120 m ² – living room/dining room/projection room – for Executive Committee – up to 10 people								

Magical atmosphere

In the historic centre of Mechelen, enjoy an extraordinary experience in the captivating setting of heritage reinvented. A veritable gem of a hotel with a magical atmosphere.

Comfort, ultra-modern facilities and high technology are united with the authenticity and uniqueness of each room.

Ambiance magique

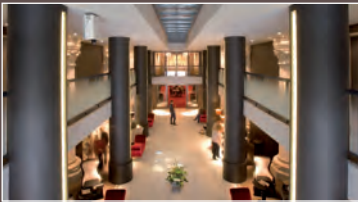
Dans le cœur historique de Malines, vivez une expérience hors du commun dans la mise en scène envoûtante de ce patrimoine réinventé. Un bijou hôtelier dans une ambiance magique.

Confort, installations ultra-modernes et hautes technologies s'associent à l'authenticité et l'originalité de chaque chambre.

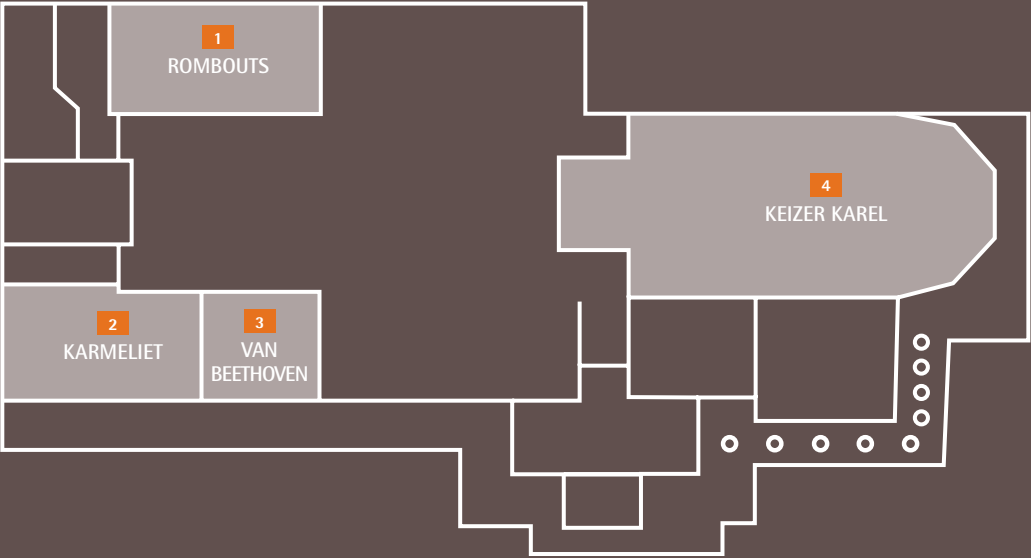
Magische sfeer







Proef, in het historische hart van Mechelen, van de geneugten van een verblijf in een tot luxueus hotel omgebouwde kerk. Wedden dat de magische sfeer u voor immer blijft?

Comfort, ultramoderne faciliteiten en geavanceerde technologie gaan gepaard met de authenticiteit en het unieke karakter van elke kamer.



4 Meeting, Banquet & Event Rooms (from 10 to 80 guests)
79 Guest Rooms & Suites • Bar • Terrace • Parking



DESCRIPTION OF MEETING & BANQUET ROOMS									
	MEETING ROOM	AREA (m²)	DIMENSIONS (m)	U-SHAPE 	CLASSROOM 	THEATRE 	CABARET 	BOARDROOM 	COCKTAIL 
1	ROMBOUTS	50	10.32 x 4.84	28	28	44	20	28	55
2	KARMELIET	47	9.05 x 4.84	20	23	34	15	22	45
3	VAN BEETHOVEN	28	5.74 x 4.84	12	11	16	—	12	30
2 + 3	VAN BEETHOVEN + KARMELIET	75	14.79 x 4.84	40	40	60	25	42	70
4	KEIZER KAREL	147.8	21.00 x 8.40	60	75	150	50	90	150

A hotel for travellers, optimised for sports enthusiasts

Just 30 minutes from Brussels, Tubize is located in a region that's not well known and yet full of attractions, with its towpath canals, small bucolic villages (like Ittre) and pretty countryside. And as it houses the Belgian Football Center – home of our Belgian national football team – the town is also a magnet for sports enthusiasts. But you don't have to be an athlete – everybody is welcome – to enjoy the beautifully appointed 4-star **MARTIN'S RED HOTEL**.

Un hôtel pour tous les voyageurs,
optimisé pour les sportifs

À 30 minutes à peine de Bruxelles, Tubize est située dans une région peu connue et pourtant pleine d'attrait, avec ses canaux de halage, ses petits villages bucoliques (à l'image d'Iltre) ou encore sa jolie campagne. C'est aussi le rendez-vous des sportifs, puisqu'elle abrite le Belgian Football Center, quartier général des Diables Rouges. Le MARTIN'S RED est l'hôtel **** situé sur le site. Il est accessible à toutes et tous, sportifs ou non.

Een hotel voor reizigers, aangepast aan sporters

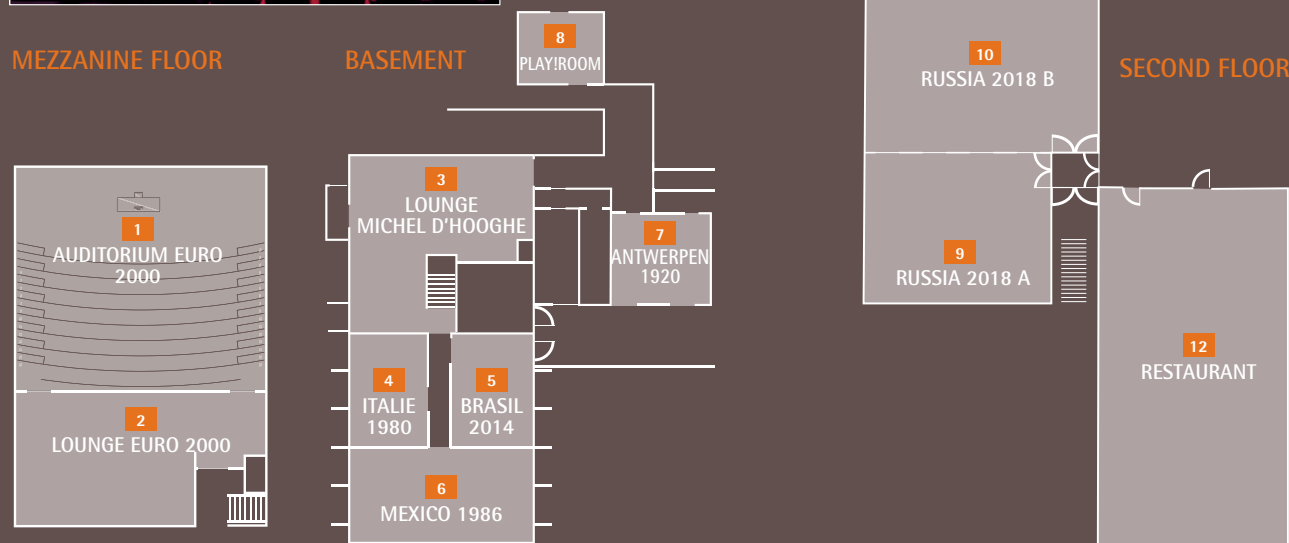
Tubeke ligt op amper 30 minuten van Brussel in een relatief ongekende streek, die nochtans blaakt van de troeven zoals zijn jaagpaden en kanalen, de rustieke dorpjes (Ittre is er een van) of het prachtige platteland. Hier kunnen sporters en sportievelingen hun hart ophalen in het Belgian Football Center, het hoofdkwartier van de Rode Duivels. **MARTIN'S RED** is het viersterrenhotel op deze belangrijke site. Het hotel staat open voor iedereen, zelfs als u niet sportief aangelegd bent.










12 Meeting, Banquet & Event Rooms • 79 Guest Rooms & Suites
Restaurant The Red's - Sports Bar & Grill • Fitness • Sport Facilities • Parking



With its 160-seat auditorium with 3 translation booths, meeting rooms, lounges and banquet rooms – only two steps from Brussels – **MARTIN'S RED** is the ideal venue for professional events.



DESCRIPTION OF MEETING & BANQUET ROOMS											
MEETING ROOM		AREA (m ²)	DIMENSIONS (m)	HEIGHT (m)	U-SHAPE 	CLASSROOM 	THEATRE 	CABARET 	BANQUET 	BOARDROOM 	COCKTAIL 
1	AUDITORIUM EURO 2000	189	13.03 x 14.48	6.00	—	—	160	—	—	—	—
2	LOUNGE EURO 2000	54	6.40 x 8.50	4.50	25	30	50	30	60	26	—
3	LOUNGE MICHEL D'HOOGHE	105	11.75 x 11.59	2.50	—	—	—	—	—	—	20
4	ITALIE 1980	39	7.32 x 4.88	2.50	15	20	30	20	—	14	—
5	BRASIL 2014	36	7.18 x 5.16	2.50	15	20	30	20	—	14	—
6	MEXICO 1986	69	5.73 x 11.60	2.50	25	36	60	32	—	24	—
7	ANTWERPEN 1920	35	5.55 x 6.37	2.50	15	20	30	18	—	12	—
8	PLAY!ROOM	31	5.55 x 5.67	2.40	11	12	28	—	—	10	—
9	RUSSIA 2018 A	116	10.89 x 10.70	3.30	30	70	140	32	—	—	—
10	RUSSIA 2018 B	141	14.46 x 9.78	3.30	38	70	126	48	—	—	—
9+10	RUSSIA 2018 A+B	257	12.54 x 20.48	3.30	70	140	266	180	—	—	160
11	THE RED'S SPORTS BAR & GRILL	269	11.8 x 22.86	2.70	—	—	—	—	50	—	70
12	RESTAURANT				—	—	—	—	160	—	200

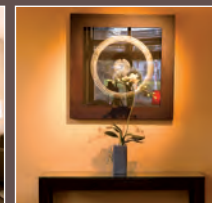


1 AUDITORIUM EURO 2000

- Multimedia Projector 1 chip DLP WUXGA (1,920 x 1,200 pixels) 8,500 ANSI lumens and 10,000:1
- 16:10 projection to canvas screen stretched over an aluminum frame (frame invisible) 700 x 438 cm
- VGA connection + Audio on the stage and to the control desk / Injection point
- HDMI connection on the stage and to the control desk / Injection Point
- HDMI connection on the stage / Point for return screen
- Blu-ray Player
- Proximus TV
- 1x Handheld wireless micro transmitter
- Active Antenna Splitter for 4 wireless microphones
- 1x Gooseneck microphone with 2 flexible sections 400 mm
- 3x Microphone connector panels XLR-3 for floor box
- 4x Panaray columnar speakers Line Array type (each side of the screen)
- 2x Panaray bass apparent modules (1x 12" woofer)
- 1x RoomMatch speaker used as central channel
- 2x RoomMatch speakers for surround
- Card with 4 Mic/Line inputs for ESP
- Dolby / DTS Surround Card
- PowerMatch amplifier 4 x 500 Watts
- Digital Audio-only conference station «Plixus Audio Engine»
- Extension module for translation station «Plixus Network Extender»
- Interpreting module management software
- 3x Plixus individual interpreter stations
- 3x separate microphones with «GSM» immunity
- 3x interpreter headsets
- Control desk: 10" colour table touch screen Modero S / Allows "custom" control of the various audio-visual equipment provided here
- Interpreting module management software on control PC
- Connections to control vehicles
- IP 54 outdoor enclosure with connections / Security door / Key lock / Dimensions: 750 x 420 x 1,250 mm / Triax connectors
- Triax panel plug 11 mm female (Panel Plug HD Pro + Cable Clamp Set)
- Interior box with connections / Front door Triax panel plug 11 mm male (Panel Plug HD Pro + Cable Clamp Set) + fitting connectors

6 MEXICO 1986

- Meeting Room installation 24 plaatsen
- Multimedia LED / Laser projector Full HD resolution (1,920 x 1,080 pixels) of 3,500 ANSI lumens and 10,000:1
- Ceiling lift system for multimedia projector
- Ceiling-recessed electric projection screen base 280 x 280 cm (1:1 format) with black edges
- HDMI connection panel
- VGA + Audio connection panel
- Room speaker sound return



MARTIN'S WATERLOO WATERLOO • BELGIUM

Home sweet home

A jewel of privacy nestling in the shadow of MARTIN's GRAND HOTEL. Total freedom. Get ready for generously proportioned sensations of comfort and serenity.

Home sweet home

Un écrin d'intimité à l'ombre bienveillante du MARTIN's GRAND HOTEL. En toute liberté. Préparez-vous à de généreuses sensations de confort et de sérénité.

Home sweet home

Een heel intiem schrijn in de geborgenheid van MARTIN's GRAND HOTEL. Een oase van rust en comfort in ieders bereik.

LA SUCRERIE RESTAURANT

4 modular Meeting Rooms (from 5 to 100 guests) @ Martin's Grand Hotel
29 Guest Rooms • Bar Le Club • Restaurant La Sucrierie • Terrace • Fitness
Parking • Electric vehicle charging stations



Go to the very source
of European history

On 18 June 1815, very close to Brussels, the future of Europe hung in the balance on the farms and Chemin Creux (sunken road) of Waterloo. Today we can all relive this fascinating epic, from the Butte du Lion (The Lion's Mound) to Napoleon's HQ, in a cosmopolitan and good-natured atmosphere!

Puiser aux sources
de l'histoire européenne

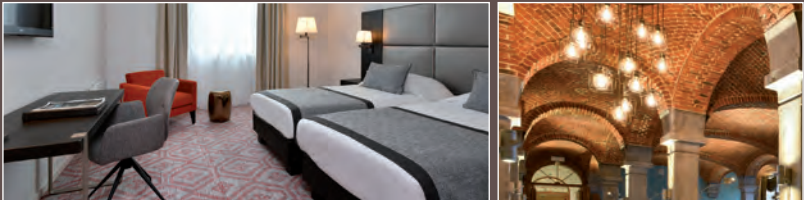
À deux pas de Bruxelles s'est joué l'avenir de l'Europe, le 18 juin 1815, dans les fermes et les chemins creux de Waterloo. Cette épopée, chacun peut la revivre aujourd'hui avec passion, de la Butte du Lion au Q.G. de Napoléon, dans une ambiance cosmopolite et bon enfant !

30

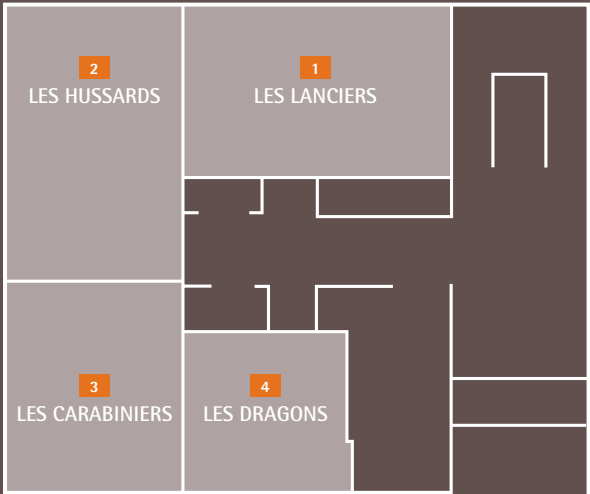
Graven naar de bronnen
van de Europese geschiedenis

Op de velden, in de holle wegen van Waterloo, vlak bij Brussel, werd op 18 juni 1815 beslist over de toekomst van Europa. Dat epos valt vandaag opnieuw te beleven, van de "Butte du Lion" (de leeuwenheuvel) tot het HK van Napoleon, in een kosmopolitische, gemoedelijke sfeer!

LA SUCRERIE
RESTAURANT






4 modular Meeting Rooms (from 5 to 100 guests)
79 Guest Rooms • Bar Le Club • Restaurant La Sucrierie • Terrace
Fitness • Parking • Electric vehicle charging stations



31

DESCRIPTION OF MEETING & BANQUET ROOMS

MEETING ROOM		AREA (m ²)	DIMENSIONS (m)	HEIGHT (m)	U-SHAPE 	CLASSROOM 	THEATRE 	CABARET 	BOARDROOM 
1	LES LANCERS	45	9.00 x 5.00	2.53	20	24	48	15	—
2	LES HUSSARDS	51	8.50 x 6.00	2.53	20	24	56	20	—
3	LES CARABINIERS	38	6.30 x 6.00	2.53	14	18	35	—	—
4	LES DRAGONS	26	5.20 x 5.00	2.53	10	12	20	—	—
1 + 2	LES LANCERS + LES HUSSARDS	97	15.20 x 5/8.50	2.53	40	47	98	—	—
2 + 3	LES HUSSARDS + LES CARABINIERS	90	15.00 x 6.00	2.53	44	48	98	35	—
3 + 4	LES CARABINIERS + LES DRAGONS	65	11.20 x 5/6.30	2.53	22	30	65	—	—
	SYNDICATE ROOMS	15	5.00 x 3.00	2.35	—	—	—	—	8

EVENT CANCELLATION INSURANCE

Severe weather conditions, a wildcat transport strike or worse still, a terrorist attack... Your event is not immune from unexpected circumstances beyond your control and which may lead to the cancellation of your event in part or in full. As of now, Martin's Hotels enables you to take out an insurance covering the cancellation of your event set to be held at one of the Martin's Hotels.

CANCELLATION INSURANCE

The premium for this insurance is 1 % of the total amount of your event, with a minimum premium of 100 euro. This premium covers all of the cancellation charges if the event had to be cancelled due to a loss of over 40 % (duration, number of people, number of events, etc.).

EXTRA PREMIUM COVERAGE

The cancellation insurance may be extended to include an extra premium that covers the unavailability of 1 or several participants specified in the insurance contract. Extra premium covering 1 person in particular: 0.5 % of the total amount of the event (including taxes). Extra premium covering a maximum of 3 persons in particular: 0.7 % of the total amount of the event (including taxes).

See more info on meetings-and-more.com



MARTIN'S HOTELS MEETING ROOMS & BANQUETING CAPACITIES

HOTEL	CITY	STARS	NUMBER OF		MIN & MAX (M²)	AIR-CO	DAY LIGHT	CAPACITY						
			BEDROOMS	MEETING ROOMS				U-SHAPE	CLASSROOM	THEATRE	CABARET	BOARDROOM	BANQUET	COCKTAIL
MARTIN'S RENTMEESTERIJ	Bilzen	★★★★	72	3	21-234	✓	✓	30	48	80	-	24	150	250
MARTIN'S BRUGGE	Brugge	★★★ ^{SUPERIOR}	199											
MARTIN'S RELAIS	Brugge	★★★★	44											
MARTIN'S BRUSSELS EU	Brussels	★★★★	100	5	25-100	✓	✓	50	80	120	48	50	100	150
MARTIN'S CHATEAU DU LAC	Genval	★★★★★	122	23	20-990	✓	✓	120	762	1,050	750	32	850	1,050
MARTIN'S MANOIR	Genval	★★★	12	4	25-110	—	✓	28	30	50	-	-	100	200
MARTIN'S KLOOSTER	Leuven	★★★★	103	3	50-190	✓	✓	56	99	146	80	54	80	240
MARTIN'S ALL SUITES	Louvain-la-Neuve	★★★★	102	9	25-220	✓	✓	50	120	224	98	72	200	400
MARTIN'S LOUVAIN-LA-NEUVE	Louvain-la-Neuve	★★★ ^{SUPERIOR}	108	9	25-220	✓	✓	50	120	224	98	72	200	400
MARTIN'S PATERSHOF	Mechelen	★★★★	79	4	28-148	✓	✓	60	75	150	50	90	90	150
MARTIN'S RED	Tubize	★★★★	79	12	31-269	✓	✓	70	140	266	180	26	160	200
MARTIN'S GRAND HOTEL	Waterloo	★★★★	79	4	15-100	✓	✓	44	48	98	35	-	120	150
MARTIN'S WATERLOO	Waterloo	★★★	29	4	15-100	✓	✓	44	48	98	-	-	120	150



Plan your teambuilding activity now and reinforce your team. Look no further at now!

At MARTIN'S HOTELS, you can combine your (non-)residential seminar with plenty of fun teambuilding activities to strengthen team spirit, boost motivation amongst employees and build trust within your team.



CHOOSE SOME ACTIVITIES

BRUSSELS

MARTIN'S BRUSSELS EU

- Garden terrace for private cocktail and dinners
- Winter Barbecue
- Ipad challenge in the city. Discover!
- Private tour bus with beer tasting and more
- City golf

GENVAL

MARTIN'S CHÂTEAU DU LAC – MARTIN'S MANOIR

- Sailing on the Genval lake
- Cocktail by the lake
- Barbecue in the gardens
- Golf and croquet initiation by pro and fun!
- Jeux sans Frontières
- 2 CV Tour through the garden of Brussels
- Yoga lessons



LEUVEN

MARTIN'S KLOOSTER

- Kayak down the Dyle
- Bike brewery tour
- Lasertag games

LOUVAIN-LA-NEUVE

MARTIN'S LOUVAIN-LA-NEUVE

MARTIN'S ALL SUITES

- Youngtimers Rallye
- Cooking contest
- Treasure Hunt of Louvain-la-Neuve

MECHELEN

MARTIN'S PATERSHOF

- Private boat trip
- City golf

TUBIZE

MARTIN'S RED

- Red devils experience
- Pro soccer experience
- Bubble soccer
- Olympic challenge
- City golf

WATERLOO

MARTIN'S GRAND HOTEL

MARTIN'S WATERLOO

- Vespa tour through the Waterloo battlefields
- Waterloo brewery guided tour



To receive a proposal,
feel free to contact us directly
by email on
mice@martinshotels.com
or call us +32 2 655 03 85



SUSTAINABLE DEVELOPMENT PROJECT PROJET DE DÉVELOPPEMENT DURABLE PROJECT VOOR DUURZAME ONTWIKKELING



For every company that seeks to reduce the environmental impact of their events, MARTIN'S HOTELS proposes COMPENSATION FOR THEIR CO₂ EMISSIONS

- ▶ through the funding of projects to create renewable energies beneficial to the climate via CO2logic.

36

MARTIN'S HOTELS propose la COMPENSATION DES ÉMISSIONS DE CO₂ à toute entreprise soucieuse de réduire l'empreinte écologique de ses événements.

- ▶ Financement de projets de création d'énergies renouvelables favorables pour le climat via CO2logic.

MARTIN'S HOTELS stelt aan bedrijven voor om de CO₂-UITSTOOT van hun evenementen TE COMPENSEREN

- ▶ door klimaatprojecten te financieren die inzetten op hernieuwbare energie. Dit gebeurt via CO2logic.

Find out more,
tomorrow-needs-today.com

**EMAS AWARDS
WINNER 2017**
MARTIN'S HOTELS
Winner in the category large organisations



This programme enables guests to participate in the efforts to protect the environment by REDUCING THE ECOLOGICAL IMPACT of their hotel stays through 5 simple and beneficial actions.

1. Requesting a light refreshment of the guest room.
 2. Re-using the bath towels.
 3. Adopting 'good practices': managing the consumption of energy and water conscientiously and sort your waste.
 4. Choosing the 'EcoetBon!' meals and beverages in our restaurants and bars.
 5. Organising personal transport in a responsible manner.
- ▶ These 5 actions allow them to earn and accumulate Eco-Bons which can be converted into MARTIN'S GIFT VOUCHERS for each stay in MARTIN'S HOTELS.

Les clients sont invités à participer aux efforts de protection de l'environnement en RÉDUISANT L'EMPREINTE ÉCOLOGIQUE de leurs séjours hôteliers grâce à 5 actions simples et utiles.

1. Demander un nettoyage allégé de sa chambre.
 2. Réutiliser ses serviettes de bain.
 3. Gérer sa consommation d'énergie et d'eau en 'bon père de famille' et trier ses déchets.
 4. Choisir les plats et les boissons 'EcoetBon!' dans nos restaurants et nos bars.
 5. Organiser son transport de manière responsable.
- ▶ Permet aux clients de gagner et de cumuler des Eco-Bons convertibles en MARTIN'S CHÈQUES-CADEAUX, pour chaque séjour au sein des MARTIN'S HOTELS.

We nodigen onze klanten uit om zich mee in te zetten voor het milieu door de ECOLOGISCHE IMPACT van hun verblijf in onze hotels TE VERMINDEREN aan de hand van 5 eenvoudige maar nuttige acties.

1. Enkel een lichte oprissing vragen van de kamer.
 2. Dezelfde badhanddoeken langer dan een dag gebruiken.
 3. Als 'goede huisvader' zijn energie- en waterverbruik beheren en afval sorteren.
 4. 'EcoetBon'-schotels en drankjes kiezen in onze restaurants en bars.
 5. Zijn transport op een zo duurzaam mogelijke manier organiseren.
- ▶ Hiermee verdienen ze bij elk verblijf bij MARTIN'S HOTELS Eco-Bonnen die ze kunnen omruilen voor MARTIN'S CADEAUBONNEN.



MARTIN'S HOTELS' environmental management according to the EMAS and ISO 14001 standards

The principles are:

- ▶ the participation of all personnel,
- ▶ the improvement of the environmental performance of our technical installations,
- ▶ the continuous reduction of the consumption of energy and natural resources,
- ▶ the involvement of our suppliers in our environmental approach,
- ▶ the control of waste production and the treatment of waste,
- ▶ the incentive for guests to reduce and offset the environmental impact of their stays.

Le système de gestion environnemental de MARTIN'S HOTELS conforme aux EMAS et ISO14001 engage :

- ▶ la participation de tout son personnel,
- ▶ l'amélioration des performances environnementales de ses installations techniques,
- ▶ la réduction continue des consommations d'énergie et de ressources naturelles,
- ▶ l'implication des fournisseurs dans sa démarche environnementale,
- ▶ la maîtrise de la production et du traitement des déchets,
- ▶ l'incitation des clients à réduire et compenser l'empreinte écologique de leurs séjours.

MARTIN'S HOTELS OBJECTIVES - OBJECTIFS - DOELSTELLINGEN 2018

	-11%	Reduce the consumption of water Réduire les consommations d'eau Het waterverbruik verminderen
	-14%	Reduce the consumption of gas Réduire les consommations de gaz Het gasverbruik verminderen
	-11%	Reduce the consumption of electricity Réduire les consommations d'électricité Het elektriciteitsverbruik verminderen
	50%	Purchase at least 50% of our Food & Beverages locally (<300 km) Acheter au moins 50% de Food & Beverage à proximité (<300km) Minstens 50% van Food & Beverage lokaal inkopen (<300km)
	30%	Sort waste so that at least 30% of the total volume of waste products is recycled Trier les déchets pour qu'au moins 30% du volume total des déchets produits soit recyclé Afval sorteren zodat minstens 30% van het totaal volume afval gerecycleerd wordt

37

Milieumanagement bij MARTIN'S HOTELS volgens de EMAS- en ISO14001-normen.

De principes luiden als volgt:

- ▶ elk personeelslid engageert zich,
- ▶ verbetering van de milieuprestaties van de technische installaties,
- ▶ vermindering van het energieverbruik en het gebruik van natuurlijke grondstoffen,
- ▶ de leveranciers worden bij onze milieu-inspanningen betrokken,
- ▶ we engageren ons om minder afval te produceren en het beter te verwerken,
- ▶ we zetten onze klanten aan om de milieu-impact van hun verblijf te beperken en te compenseren.



Green Key for MARTIN'S KLOOSTER – MARTIN'S PETERSHOF – MARTIN'S BRUSSELS EU
The Green Key label is awarded to tourism establishments that respect the environment and natural resources and that meet certain specific criteria concerning the management of water, energy, waste, and cleaning products.



Eco-dynamic Enterprise for MARTIN'S BRUSSELS EU is an official recognition in the Brussels-Capital Region for companies in Brussels that implement environmental management internally, particularly with regard to the management and prevention of waste, the wise use of energy and water, and other criteria as well...



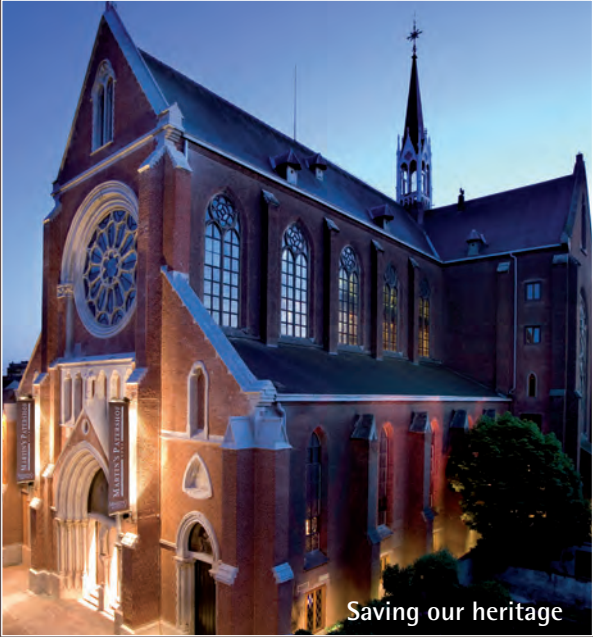
Children's Wellness



enavantlesenfants.com



Fairtrade - comequi.org



Saving our heritage



Culture and patronage



Martin's Hotels is sensitive and involved
in many social and cultural actions

Find out more, click on <http://www.martinshotels.com/en/corporate-humanitary>



Martin's Gift Vouchers

The joy of giving for pleasure

Discover holiday ideas and our special offers, by hotel or by theme, at martinshotels.com

Martin's Gift Vouchers are accepted in all of our hotels, restaurants and spa for "à la carte" stays. The gift vouchers can be used to pay for your stay in full or in part.



MARTIN'S HOTELS | A COLLECTION OF GREAT HOSPITALITY
TOMORROW NEEDS TODAY | HOTELS - RESTAURANTS - MEETINGS - EVENTS - SPA - GOLF

Info & Contact • tel. +32 (02) 655 03 82 • voucher@martinshotels.com • martinshotels.com



MARTIN'S HOTELS

TOMORROW NEEDS TODAY

A COLLECTION OF GREAT HOSPITALITY
HOTELS - RESTAURANTS - MEETINGS - EVENTS - SPA - GOLF

martinshotels.com

